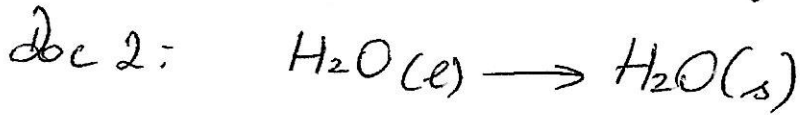
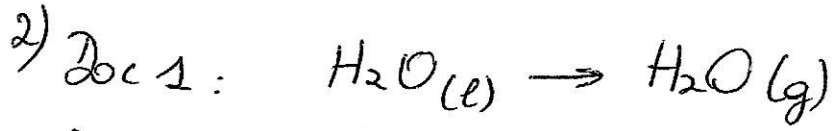


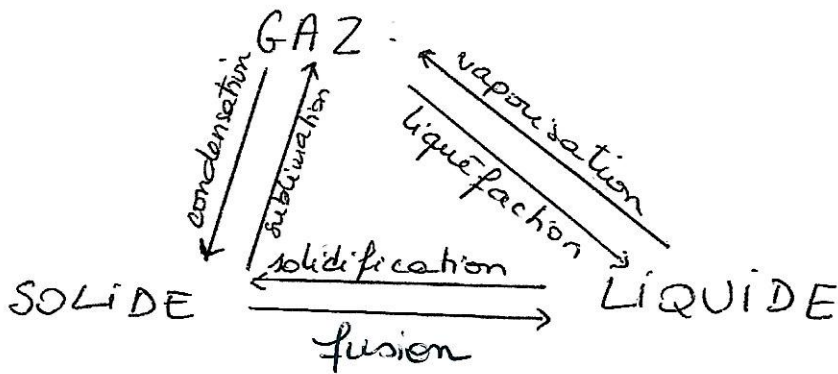
# CORRECTION : les changements d'état

Th 1  
Ch 6  
Act 1

- 1) Doc 1 - liquide  $\rightarrow$  gaz
- Doc 2 - liquide  $\rightarrow$  solide
- Doc 3 - gaz  $\rightarrow$  liquide
- Doc 4 - liquide  $\rightarrow$  gaz



3)



- 4) liquéfaction : buée qui se forme sur les vitres  
( vapeur d'eau  $\rightarrow$  buée )  
GAZ LIQUIDE